

# STARMAN

DAVID BOWIE

♩ = 105 INTRO

Musical notation for the Intro section, 4/4 time signature. It consists of five measures of whole rests, followed by a melodic line starting with a quarter rest, then a quarter note, an eighth note, and a sixteenth note.

## VERSE

Musical notation for the first part of the Verse. It features a drum pattern with 'x' marks on the first four notes, followed by a melodic line. The notation includes repeat signs and a first ending bracket.

Musical notation for the second part of the Verse, including a first ending and a second ending. The first ending leads back to the start of the verse, and the second ending concludes with a double bar line.

## CHORUS

Musical notation for the first part of the Chorus. It features a drum pattern with 'x' marks on the first four notes, followed by a melodic line. The notation includes repeat signs and a 'NC' (No Cymbal) marking.

Musical notation for the second part of the Chorus, consisting of four measures of rests.

Musical notation for the third part of the Chorus, featuring a drum pattern with 'x' marks and a melodic line. It concludes with a double bar line and a Coda symbol.

## BRIDGE

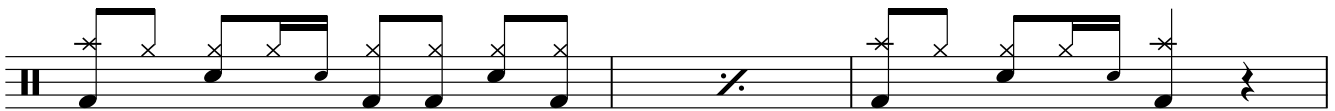
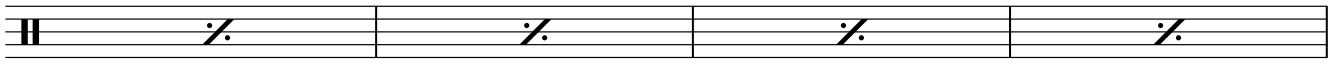
Musical notation for the Bridge, featuring a drum pattern with 'x' marks and a melodic line. The notation includes repeat signs and a 'NC' (No Cymbal) marking.

D.S. Al Coda

## CHORUS

Musical notation for the final part of the Chorus, featuring a drum pattern with 'x' marks and a melodic line. It begins with a Coda symbol and includes repeat signs and a 'NC' (No Cymbal) marking.

2 STARMAN



OUTRO



Repeat to fade